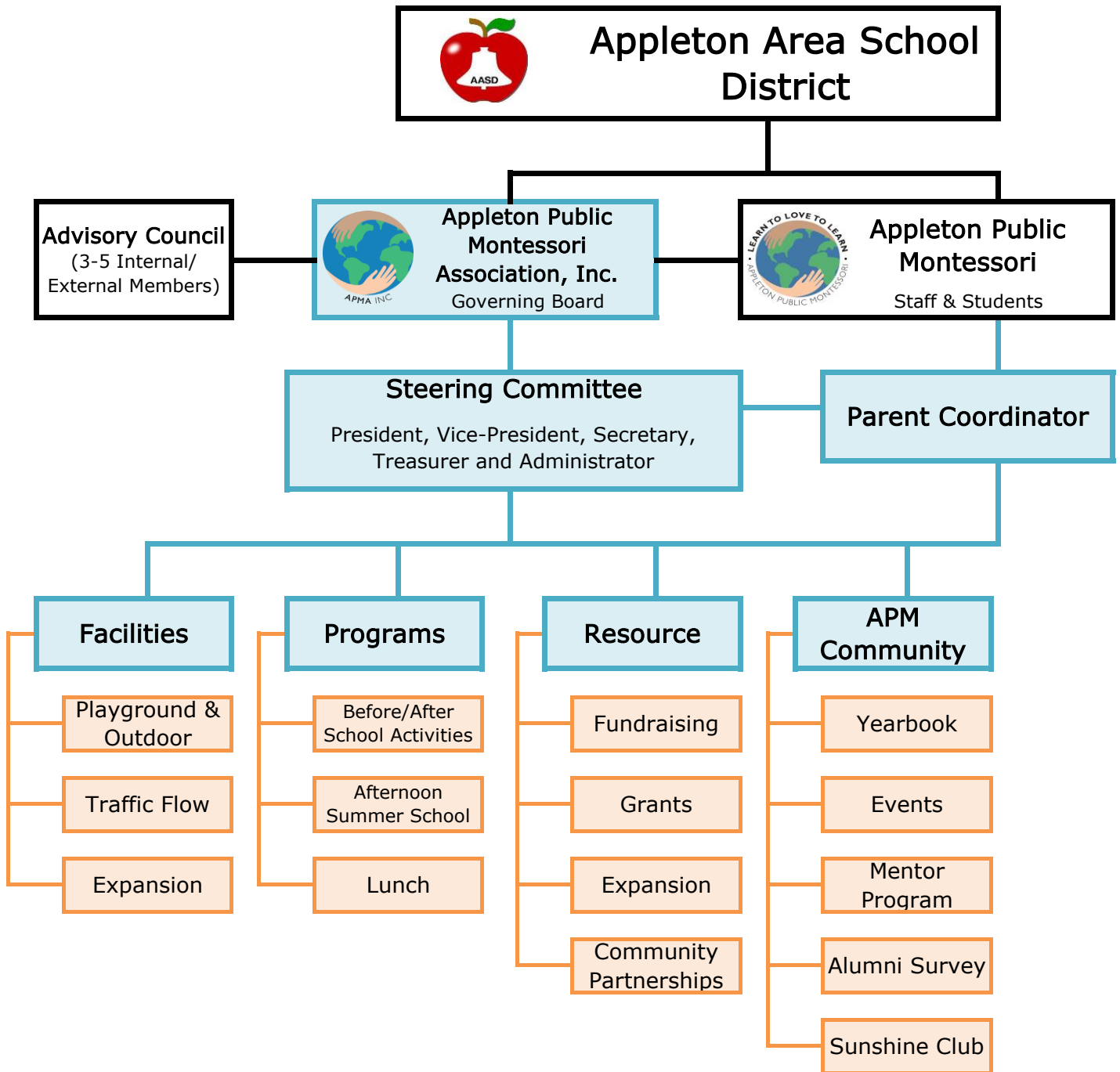





Appleton Public Montessori Association, Inc.  
Governing Board Structure



NOTES:

 APMA, Inc. consists of 13 voting members and 1 non-voting member (Administrator)

 Action Committees and sub-committees are led by parents, guardians and any interested community and staff members; with a Board Member liaison.

 Advisory Council is comprised of 3-5 external community members who provide insight and recommendations for success between two and three times per year.